



ROADSTER
SERVICE
 Bulletin



April 16, 2010

Subject: **Gauge Malfunctions**

No. **2010-8**

YEAR	MODEL	MODEL NUMBER	SERIAL NUMBER
2010	Spyder RT	All	All

This service bulletin provides troubleshooting for the multifunction gauge.

Before UNNECESSARILY replacing a multifunction gauge, read the following.

Multifunction gauge malfunctions fall in 3 categories:

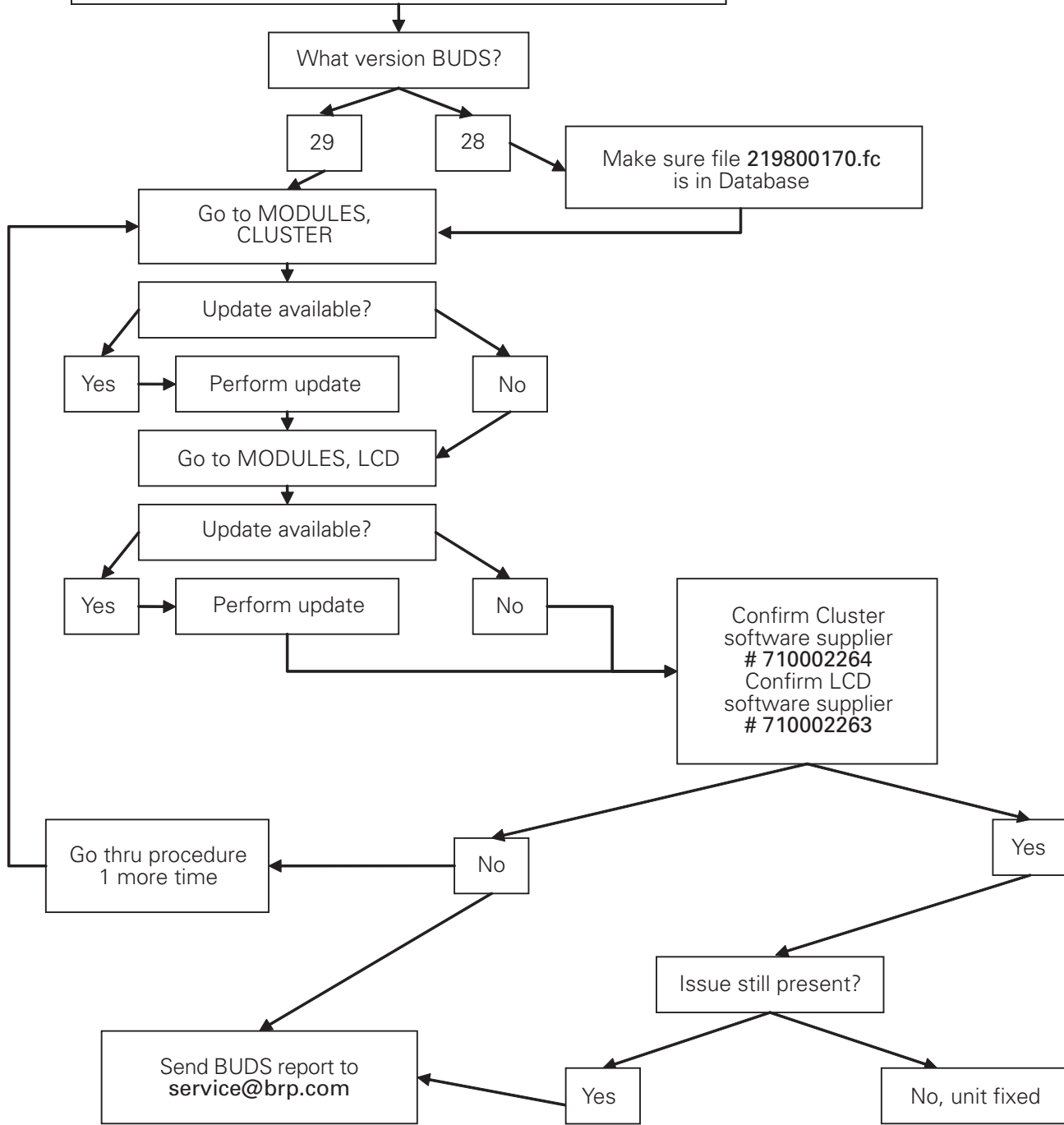
- D.E.S.S. key programming
- Hardware
- Software.

The following table describes the most-observed symptoms only, other symptoms may be observed.

GAUGE SYMPTOMS	TYPE OF PROBLEMS	SOLUTION
- Multifunction gauge flashes at shutdown	D.E.S.S. key programming	- Only one D.E.S.S. key is programmed. Program a minimum of 2 D.E.S.S. keys.
- Speedometer and/or tachometer needles not working at all or intermittently. - Indicator lamps not lit - Lines or blank digital display	Hardware	- Check for supply voltage and ground at load shedding relay or suspension relay and fuses. - Repair wiring harness or replace the multifunction gauge if supply voltage and grounds are available.
- Options changing on their own - MPH or km/h indicator flashing or not staying at the set preference - Language not selectable or changes intermittently - Digital display (LCD) screen changing color (completely orange with no warning display).	Software	- Verify the version of software in digital display (LCD) and multifunction gauge. In order to insure the display and the gauge have the correct software, refer to the flowchart on the next page, and update as required.

NOTE: Software issues can be corrected MOST of the time without replacing parts.

MULTIFUNCTION GAUGE MALFUNCTION



rbs2010-009-001_aen